



RACCORDI PER SONDA
SOUND TUBE DECK PLATES

FIG.780

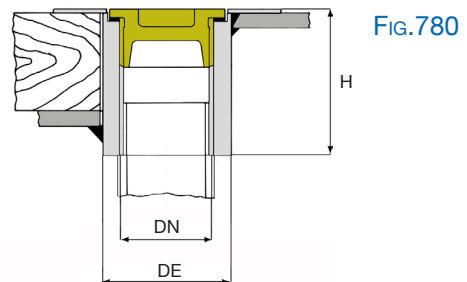
Boccola per sonda
Sounding bush

FIG.781

Tappo per sonda
Sounding cup

Materiali - Composition

ES.	MANICOTTO Sleeve	TAPPO Plug
A	ACCIAIO ZINCATO GALVANIZED STEEL	BRONZO BRONZE
I	ACCIAIO INOX STAINLESS STEEL	



Dimensioni *Dimensions* mm.

Fig.	DN	1.1/2"	2"
780	DE	70	83
	H	90	90
781	DE	49	61
	H	56	63

FIG.781

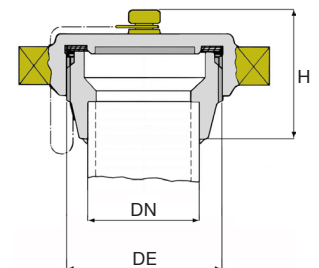


FIG.790

Raccordo a flangia
Flanged connection

Materiali - Composition

FLANGIA Flangia	TAPPO Plug
BRONZO BRONZE	BRONZO BRONZE

Dimensioni *Dimensions* mm.

DN	40	65
DE	UNI 45	UNI 70
L	65	80
D	150	185
K	110	145
n.fori - Ø	4 - 18	4 - 18

FIG.790

