



Giunti di congiunzione *Pipe couplings*

**GIUNTI TEEKAY**

**TEEKAY COUPLINGS**

TIPOLOGIE

MODELS

Pag. 2

GIUNTI AXILOCK

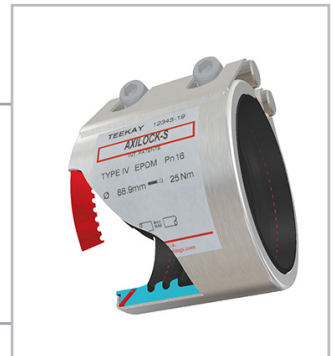
AXILOCK TYPE

Pag. 3

GIUNTI AXILOCK **FIRE PROOF**

AXILOCK **FIRE PROOF**

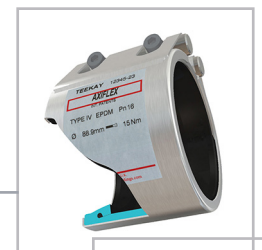
Pag. 4



GIUNTI AXIFLEX

AXIFLEX TYPE

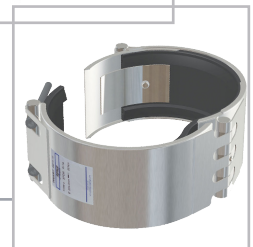
Pag. 5



GIUNTI REPAIR

REPAIR TYPE

Pag. 6



SITO PRODUTTORE WEBSITE PRODUCER : [WWW.TEEKAYCOUPLINGS.COM/INDEX.PHP](http://WWW.TEEKAYCOUPLINGS.COM/INDEX.PHP)

**GIUNTI DRESSER**

**DRESSER COUPLINGS**

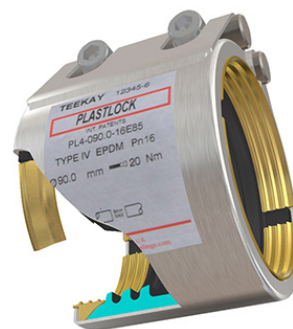
GIUNTI STYLE 129

STYLE 129 TYPE

Pag. 7



## GIUNTI TEEKAY TEEKAY COUPLINGS



### GIUNTO AXILOCK AXILOCK COUPLING

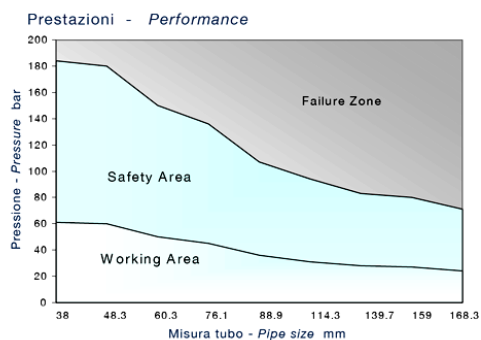
DIMENSIONI E CARATTERISTICHE A PAG. **R 3 - R 4**  
DIMENSIONS AND CHARACTERISTICS SEE PAG



Il grip insieme alla guarnizione assicurano una alta resistenza alla pressione assiale.  
- Molto resistente alle vibrazioni di lunga durata  
- Guarnizione totale (nessun metallo a contatto con il fluido)  
- Nessuna saldatura a punti  
- Disponibile la versione FP Fireproof

*Ultra high security axial restraint pipe coupling system for plain ended pipes*

- Highly fatigue resistant to long term vibrations
- Equally resistant to internal pressure or external axial load
- 100% rubber lined (no exposed metal)
- No spot welding
- Available in Fireproof version



### GIUNTO AXIFLEX AXIFLEX COUPLING

DIMENSIONI E CARATTERISTICHE A PAG. **R 5**  
DIMENSIONS AND CHARACTERISTICS SEE PAG



Permette il movimento assiale e laterale dei tubi al suo interno garantendo la tenuta idraulica.  
- Adatto a tubi in ferro - plastica e vetroresina  
- Guarnizione totale (nessun metallo a contatto con il fluido)  
- Nessuna saldatura a punti

*Non axial restraint pipe coupling system for joining most plain end pipe materials*

- Suitable for joining plastics and GRP
- Low radial loading
- Allows generous pipe tolerances and axial movements
- Combines high strength with flexibility
- 100% rubber lined (no exposed metal)
- No spot welding



### GIUNTO AXIFLEX REPAIR AXIFLEX REPAIR COUPLING

DIMENSIONI E CARATTERISTICHE A PAG. **R 6**  
DIMENSIONS AND CHARACTERISTICS SEE PAG



Apertura totale per l'avvolgimento del tubo da riparare  
- Adatto a riparare tubi sotto pressione  
- Riparazione permanente  
- Progettato per essere installato in zone di accesso limitato  
- Adatto per la maggior parte dei materiali per costruzione tubi

- A fully opening pipe coupling for wrap around repairs*
- Suitable for repairing pipelines under pressure
  - A permanent pipeline repair solution
  - Designed for easy installation in areas of limited access
  - No loose parts
  - Suitable for most pipe materials



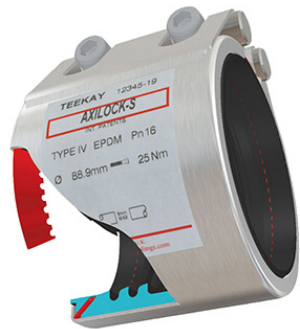
### Certificazioni - Approval



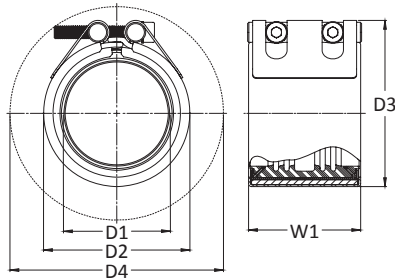
[www.teekaycouplings.com/approvals.html](http://www.teekaycouplings.com/approvals.html)

Teekay  
Couplings Ltd





## GIUNTI AXILOCK CON GRIP TENUTA ASSIALE AXILOCK PIPE COUPLINGS



### Materiali - Composition

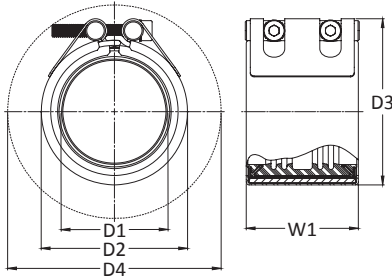
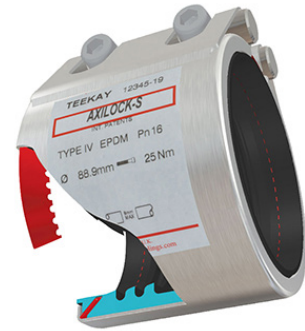
TYPE	CORPO BODY	TIRANTI FASTENERS	GUARNIZIONE GASKED
I	ACCIAIO INOX AISI304 <i>STAINLESS STEEL</i>	ACCIAIO ZINCATO+ PTFE <i>GALVANIZED STEEL + PTFE</i>	NBR - EPDM - VITON 80°C. 120°C 180°C
II	ACCIAIO INOX AISI304 <i>STAINLESS STEEL</i>	ACCIAIO INOX 316 + MOLIDAL <i>STAINLESS STEEL</i>	
IV	ACCIAIO INOX AISI316L <i>STAINLESS STEEL</i>	ACCIAIO INOX 316 + MOLIDAL <i>STAINLESS STEEL</i>	

D1 Pipe O.D.	O.D. Tolerance	Working Pressure		Axial Pull	W1	D2	D3	D4	Screw Size	Hex Socket Adaptor	Weight	Box Qty
(mm)	(mm)	(bar)	(bar)	(N)	(mm)	(mm)	(mm)	(mm)		(mm)	KG	
38	37.0 / 39.0	16	42	14069	65	55	67	130	2 x M8	6	0.42	12
42.4	41.4 / 43.4	16	42	16950	65	60	71	132	2 x M8	6	0.43	12
44.5	43.5 / 45.5	16	42	18360	65	62	73	134	2 x M8	6	0.45	12
48.3	47.3 / 49.3	16	42	21263	65	66	77	136	2 x M8	6	0.47	12
54.0	53.0 / 55.0	16	42	25463	88	71	87	138	2 x M8	6	0.72	12
57.0	56.0 / 58.0	16	42	27570	88	74	90	140	2 x M8	6	0.85	12
60.3	59.0 / 62.0	16	42	30855	88	78	93	143	2 x M8	6	0.87	12
63.0	62.0 / 65.0	16	42	32432	88	80	96	145	2 x M8	6	0.90	12
67.0	66.0 / 69.0	16	42	35271	88	84	100	147	2 x M8	6	0.90	12
70.0	69.0 / 72.0	16	42	36575	88	87	103	150	2 x M8	6	0.91	12
73.0	72.0 / 75.0	16	42	35590	88	90	106	152	2 x M8	6	0.93	12
76.1	75.0 / 78.0	16	42	37312	88	94	109	185	2 x M10	8	0.95	12
82.5	81.5 / 84.5	16	42	43317	88	101	116	189	2 x M10	8	1.00	12
84.0	83.0 / 86.0	16	42	43627	88	102	118	190	2 x M10	8	1.02	12
88.9	88.0 / 91.0	16	42	44352	88	107	123	193	2 x M10	8	1.05	12
98.0	97.0 / 100.0	16	42	59613	88	116	132	200	2 x M10	8	1.25	12
101.6	100.5 / 103.5	16	42	63263	88	120	136	202	2 x M10	8	1.28	12
104.0	103.0 / 106.0	16	42	65779	88	122	138	204	2 x M10	8	1.31	12
108.0	107.0 / 110.0	16	42	69651	88	126	142	207	2 x M10	8	1.35	12
110.0	109.0 / 112.0	16	42	72254	88	128	144	208	2 x M10	8	1.41	12
114.3	113.0 / 116.0	16	42	76987	89	133	149	211	2 x M10	8	1.50	12
118.0	117.0 / 120.0	16	42	79864	89	137	154	214	2 x M10	8	1.58	5
127.0	126.0 / 129.0	16	42	87442	89	146	163	221	2 x M10	8	1.75	5
129.0	128.0 / 131.0	16	42	89562	89	148	165	223	2 x M10	8	1.85	5
133.0	132.0 / 135.0	16	42	94510	114	152	177	236	2 x M12	10	2.46	5
139.7	139.0 / 142.0	16	42	101205	114	159	184	241	2 x M12	10	2.65	5
141.3	140.5 / 143.5	13	34	101968	115	162	187	243	2 x M12	10	2.80	5
144.0	143.0 / 146.0	13	34	104272	115	164	190	245	2 x M12	10	2.90	4
154.0	153.0 / 156.0	13	34	112025	115	174	200	253	2 x M12	10	3.05	4
159.0	158.0 / 161.0	13	34	117195	115	179	205	257	2 x M12	10	3.15	4
165.0	164.0 / 167.0	13	34	124068	115	185	211	262	2 x M12	10	3.25	4
168.3	167.0 / 170.0	13	34	126855	115	189	214	265	2 x M12	10	3.40	4
170.0	169.0 / 172.0	13	34	129431	115	190	216	266	2 x M12	10	3.41	4



GIUNTI AXILOCK FP  
CON GRIP TENUTA ASSIALE **FIRE PROOF**

AXILOCK COUPLINGS **FIRE PROOF**



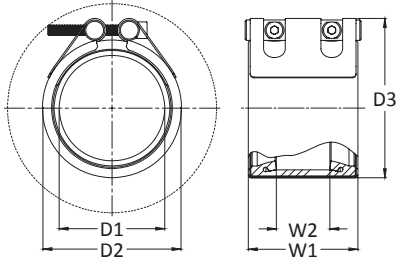
Materiali - Composition

TYPE	CORPO BODY	TIRANTI FASTENERS	GUARNIZIONE GASKED
I	ACCIAIO INOX AISI304 STAINLESS STEEL	ACCIAIO ZINCATO+ PTFE GALVANIZED STEEL + PTFE	NBR - EPDM - VITON 80°C. 120°C 180°C
II	ACCIAIO INOX AISI304 STAINLESS STEEL	ACCIAIO INOX 316 + MOLIDAL STAINLESS STEEL	
IV	ACCIAIO INOX AISI316L STAINLESS STEEL	ACCIAIO INOX 316 + MOLIDAL STAINLESS STEEL	

D1 Pipe O.D.	O.D. Tolerance	Working Pressure		Axial Pull	W1	D2	D3	D4	Screw Size	Hex Socket Adaptor	Weight	Box Qty
		(bar)	(bar)									
38.0	37.0 / 39.0	16	42	7260	87	67	82	151	2 x M8	6	0.8	12
42.4	41.4 / 43.4	16	42	9040	87	71	86	154	2 x M8	6	0.9	12
44.5	43.5 / 45.5	16	42	9957	87	73	89	155	2 x M8	6	0.9	12
48.3	47.3 / 49.3	16	42	11730	87	77	92	157	2 x M8	6	1.0	12
54.0	53.0 / 55.0	16	42	14662	87	83	98	161	2 x M8	6	1.0	12
57.0	56.0 / 58.0	16	42	16337	87	86	101	163	2 x M8	6	1.0	12
60.3	59.0 / 62.0	16	42	18283	87	89	105	165	2 x M8	6	1.2	10
63.0	62.0 / 65.0	16	42	19957	87	92	108	167	2 x M8	6	1.2	10
67.0	66.0 / 69.0	16	42	22572	87	96	111	170	2 x M8	6	1.2	10
70.0	69.0 / 72.0	16	42	24639	87	100	116	172	2 x M8	6	1.2	10
73.0	72.0 / 75.0	16	42	26796	87	101	117	173	2 x M8	6	1.3	10
76.1	75.0 / 78.0	16	42	29120	88	104	123	188	2 x M10	8	1.3	10
82.5	81.5 / 84.5	16	42	34224	88	111	129	193	2 x M10	8	1.3	10
84.0	83.0 / 86.0	16	42	35749	88	112	131	194	2 x M10	8	1.3	10
88.9	88.0 / 91.0	16	42	39739	88	117	136	198	2 x M10	8	1.4	10
98.0	97.0 / 100.0	16	42	48291	88	125	144	206	2 x M10	8	1.8	10
101.6	100.5 / 103.5	16	42	51905	114	128	147	216	2 x M10	8	2.3	10
104.0	103.0 / 106.0	16	42	54386	114	131	149	218	2 x M10	8	2.3	10
108.0	107.0 / 110.0	16	42	58650	114	134	153	221	2 x M10	8	2.4	10
110.0	109.0 / 112.0	16	42	60842	114	136	156	223	2 x M10	8	2.5	10
114.3	113.0 / 116.0	16	42	65692	114	141	159	226	2 x M10	8	2.5	8
118.0	117.0 / 120.0	16	42	70014	114	145	163	230	2 x M10	8	2.6	8
127.0	126.0 / 129.0	16	42	81101	114	155	175	236	2 x M10	8	2.7	4
129.0	128.0 / 131.0	16	42	83675	114	157	177	238	2 x M12	10	3.8	4
133.0	132.0 / 135.0	16	42	88945	115	161	186	241	2 x M12	10	3.9	4
139.7	139.0 / 142.0	16	42	98132	115	168	193	247	2 x M12	10	4.0	4
141.3	140.5 / 143.5	16	42	100393	115	170	194	248	2 x M12	10	4.0	4
144.0	143.0 / 146.0	16	42	104266	115	173	197	251	2 x M12	10	4.0	4
154.0	153.0 / 156.0	16	42	119251	115	183	207	261	2 x M12	10	4.2	4
159.0	158.0 / 161.0	16	42	127120	117	189	215	291	2 x M16	14	5.0	4
165.0	164.0 / 167.0	16	42	136895	117	195	221	296	2 x M16	14	5.1	4
168.3	167.0 / 170.0	16	42	142425	117	199	224	298	2 x M16	14	5.2	4
170.0	169.0 / 172.0	16	42	145317	117	201	226	300	2 x M16	14	5.2	4
193.7	193.0 / 196.0	12	31	141495	120	225	251	319	2 x M16	14	6.5	2
219.1	218.0 / 221.0	12	31	181036	120	251	277	341	2 x M16	14	6.8	2



## GIUNTI AXIFLEX AXIFLEX COUPLINGS



110 mm wide

### Materiali - Composition

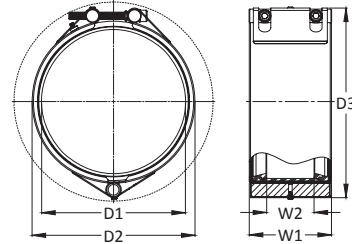
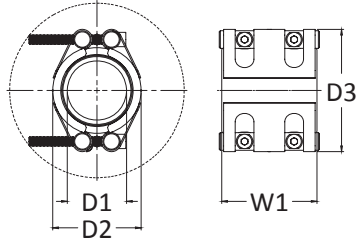
TYPE	CORPO BODY	TIRANTI FASTENERS	GUARNIZIONE GASKED
I	ACCIAIO INOX AISI304 STAINLESS STEEL	ACCIAIO ZINCATO+ PTFE GALVANIZED STEEL + PTFE	NBR - EPDM - VITON 80°C. 120°C 180°C
II	ACCIAIO INOX AISI304 STAINLESS STEEL	ACCIAIO INOX 316 + MOLIDAL STAINLESS STEEL	
IV	ACCIAIO INOX AISI316L STAINLESS STEEL	ACCIAIO INOX 316 + MOLIDAL STAINLESS STEEL	

D1 Pipe O.D.	O.D. Tolerance	Working Pressure Available in the following PN ratings:	W1	W2	D2	D3	Screw Size	Hex Socket Adaptor	Weight
(mm)	(mm)		(mm)	(mm)	(mm)	(mm)		(mm)	KG
88.9	87.0 / 91.0	16 / 25 / 40	1106	71	11	1332	x M10	82	.0
98.0	96.0 / 100.0	16 / 25 / 40	1106	71	20	1422	x M10	82	.0
101.6	100.0 / 104.0	16 / 25 / 40	1106	71	24	1462	x M10	82	.0
104.0	102.0 / 106.0	16 / 25 / 40	1106	71	26	1482	x M10	82	.0
108.0	106.0 / 110.0	16 / 25 / 40	1106	71	30	1522	x M10	82	.0
110.0	108.0 / 112.0	16 / 25 / 40	1106	71	32	1542	x M10	82	.0
114.3	112.0 / 116.0	16 / 25 / 40	1106	71	36	1582	x M10	82	.0
118.0	116.0 / 120.0	16 / 25 / 40	1106	71	40	1622	x M10	82	.0
127.0	125.0 / 129.0	16 / 25 / 40	1106	71	49	1712	x M10	82	.2
129.0	127.0 / 131.0	16 / 25 / 40	1106	71	51	1732	x M10	82	.2
133.0	131.0 / 135.0	16 / 25 / 40	1106	71	55	1772	x M10	82	.3
139.7	138.0 / 142.0	16 / 25 / 40	1106	71	62	1842	x M10	82	.3
141.3	139.0 / 143.0	16 / 25 / 40	1106	71	63	1862	x M10	82	.3
144.0	142.0 / 146.0	16 / 25 / 40	1106	71	66	1882	x M10	82	.3
154.0	151.0 / 156.01	61	10	67	1761	98	2 x M108		2.4
159.0	156.0 / 161.01	61	10	67	1812	03	2 x M108		2.5
165.0	162.0 / 167.01	61	10	67	1872	09	2 x M108		2.5
168.3	165.0 / 170.01	61	10	67	1902	12	2 x M108		2.5
170.0	167.0 / 172.01	61	10	67	1922	14	2 x M108		2.5
193.7	191.0 / 197.01	61	10	67	2162	38	2 x M108		2.8
219.1	216.0 / 222.01	61	10	67	2422	63	2 x M108		3.2
222.0	218.0 / 224.01	61	10	67	2442	66	2 x M108		3.2
244.5	241.0 / 247.01	61	10	67	2672	89	2 x M108		3.3
267.0	264.0 / 270.01	61	10	67	2893	11	2 x M108		3.5
273.0	270.0 / 276.01	61	10	67	2953	17	2 x M108		3.5
323.9	321.0 / 327.01	01	10	67	3463	68	2 x M108		3.8
326.0	322.0 / 328.01	01	10	67	3483	70	2 x M108		3.8



# GIUNTI REPAIR

## REPAIR COUPLINGS



D1 Pipe O.D.	Pipe Nominal Bore	Available Coupling Widths:						Working Pressure Available in the following PN ratings:	W2	D2 Coupling O.D. = D1 (mm) + the following:
		(mm)	85 mm	110 mm	140 mm	210 mm	310 mm			
	40	●						16 / 25 / 40	42	20
	50	●						16 / 25 / 40	42	20
	75		●					16 / 25 / 40	67	22
	100		●					16 / 25 / 40	67	22
	150		●	●				16 / 25 / 40	67 / 80	22 / 28
	200		●	●	●			16 / 25 / 40	67 / 80 / 120	22 / 28 / 42
	250		●	●	●			16 / 25 / 40	67 / 80 / 120	22 / 28 / 42
	300		●	●	●	●		10 / 16 / 25	67 / 80 / 120 / 220 / 320	22 / 28 / 42 / 42 / 42
	350			●	●	●	●	10 / 16 / 25	80 / 120 / 220 / 320	28 / 42 / 42 / 42
	400			●	●	●	●	10 / 16 / 25	80 / 120 / 220 / 320	28 / 42 / 42 / 42
	450			●	●	●	●	10 / 16 / 25	80 / 120 / 220 / 320	28 / 42 / 42 / 42
	500			●	●	●	●	6 / 10 / 16	80 / 120 / 220 / 320	28 / 42 / 42 / 42
	600			●	●	●	●	6 / 10 / 16	80 / 120 / 220 / 320	28 / 42 / 42 / 42
	700			●	●	●	●	6 / 10 / 16	80 / 120 / 220 / 320	28 / 42 / 42 / 42
	800			●	●	●	●	6 / 10 / 16	80 / 120 / 220 / 320	28 / 42 / 42 / 42
	900			●	●	●	●	2.5 / 6 / 10	80 / 120 / 220 / 320	28 / 42 / 42 / 42
	1000			●	●	●	●	2.5 / 6 / 10	80 / 120 / 220 / 320	28 / 42 / 42 / 42
	1100			●	●	●	●	2.5 / 6 / 10	80 / 120 / 220 / 320	28 / 42 / 42 / 42
	1200			●	●	●	●	2.5 / 6 / 10	80 / 120 / 220 / 320	28 / 42 / 42 / 42
	1300			●	●	●	●	2.5 / 6	80 / 120 / 220 / 320	28 / 42 / 42 / 42
	1400			●	●	●	●	2.5 / 6	80 / 120 / 220 / 320	28 / 42 / 42 / 42
	1500			●	●	●	●	2.5 / 6	80 / 120 / 220 / 320	28 / 42 / 42 / 42
	1600				●	●	●	2.5 / 6	120 / 220 / 320	42 / 42 / 42
	1700				●	●	●	2.5 / 6	120 / 220 / 320	42 / 42 / 42
	1800				●	●	●	2.5 / 6	120 / 220 / 320	42 / 42 / 42
	1900				●	●	●	2.5 / 6	120 / 220 / 320	42 / 42 / 42
	2000				●	●	●	2.5 / 6	120 / 220 / 320	42 / 42 / 42
	2100				●	●	●	2.5	120 / 220 / 320	42 / 42 / 102
	2200				●	●	●	2.5	120 / 220 / 320	42 / 42 / 102
	2300				●	●	●	2.5	120 / 220 / 320	42 / 42 / 102
	2400				●	●	●	2.5	120 / 220 / 320	42 / 42 / 102
	2500				●	●	●	2.5	120 / 220 / 320	42 / 42 / 102
	2600				●	●	●	2.5	120 / 220 / 320	42 / 42 / 102
	2700				●	●	●	2.5	120 / 220 / 320	42 / 42 / 102
	2800				●	●	●	2.5	120 / 220 / 320	42 / 42 / 102
	2900				●	●	●	2.5	120 / 220 / 320	42 / 42 / 102
	3000				●	●	●	2.5	120 / 220 / 320	42 / 42 / 102

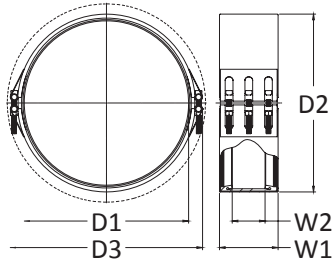
Teekay Repair Couplings are available to suit any pipe O.D. up to 3000 mm. Please contact us with OD prior to order placement.





# GIUNTI REPAIR

## REPAIR COUPLINGS



D3 Overall Coupling O.D. = D1 (mm) + the following:	Number of Screws	Approximate Weight	Maximum Allowable Tolerance on Pipe O.D. +/-	Pipe Nominal Bore	D1 Pipe O.D.
(mm)		(KG)	(mm)	(mm)	
58	4	2.2	2	40	
58	4	2.6	2	50	
66	2	3	2	75	
66	2	3	2	100	
66 / 88	2 / 2	4 / 5	2.5 / 2.5	150	
66 / 88 / 102	2 / 2 / 2	4 / 6 / 10	3 / 3 / 3	200	
66 / 88 / 102	2 / 2 / 2	5 / 6 / 10	3 / 3 / 3	250	
66 / 88 / 102 / 102	2 / 2 / 2 / 4 / 6	5 / 7 / 11 / 21 / 27	3 / 4 / 4 / 4 / 4	300	
88 / 102 / 102 / 102	2 / 3 / 4 / 6	8 / 13 / 22 / 29	4 / 4 / 4 / 4	350	
88 / 102 / 102 / 102	2 / 3 / 4 / 6	9 / 15 / 24 / 31	4 / 4 / 4 / 4	400	
88 / 102 / 102 / 102	2 / 3 / 4 / 6	11 / 16 / 26 / 34	4 / 4 / 4 / 4	450	
88 / 102 / 102 / 102	2 / 3 / 4 / 6	11 / 18 / 31 / 38	4 / 4 / 4 / 4	500	
88 / 102 / 102 / 102	2 / 3 / 4 / 6	13 / 20 / 35 / 45	4 / 5 / 5 / 5	600	
88 / 102 / 102 / 102	2 / 3 / 4 / 6	14 / 25 / 39 / 50	4 / 5 / 5 / 5	700	
88 / 102 / 102 / 102	2 / 3 / 4 / 6	16 / 27 / 43 / 55	4 / 5 / 5 / 5	800	
88 / 102 / 102 / 102	2 / 3 / 4 / 6	18 / 30 / 46 / 61	4 / 5 / 5 / 5	900	
88 / 102 / 102 / 102	2 / 3 / 4 / 6	19 / 33 / 50 / 66	4 / 5 / 5 / 5	1000	
88 / 102 / 102 / 102	2 / 3 / 4 / 6	20 / 41 / 54 / 71	4 / 5 / 5 / 5	1100	
88 / 102 / 102 / 102	2 / 3 / 4 / 6	22 / 44 / 58 / 76	4 / 5 / 5 / 5	1200	
88 / 102 / 102 / 102	4 / 6 / 8 / 12	27 / 48 / 64 / 83	4 / 6 / 6 / 6	1300	
88 / 102 / 102 / 102	4 / 6 / 8 / 12	29 / 51 / 68 / 90	4 / 6 / 6 / 6	1400	
88 / 102 / 102 / 102	4 / 6 / 8 / 12	32 / 53 / 72 / 95	4 / 6 / 6 / 6	1500	
102 / 102 / 102	4 / 6 / 8 / 12	57 / 76 / 100	6 / 6 / 6	1600	
102 / 102 / 102	4 / 6 / 8 / 12	60 / 80 / 105	6 / 6 / 6	1700	
102 / 102 / 102	4 / 6 / 8 / 12	62 / 84 / 110	6 / 6 / 6	1800	
102 / 102 / 102	4 / 6 / 8 / 12	66 / 84 / 115	6 / 6 / 6	1900	
102 / 102 / 102	4 / 6 / 8 / 12	65 / 88 / 120	6 / 6 / 6	2000	
102 / 102 / 102	4 / 6 / 8 / 24	68 / 91 / 142	6 / 6 / 6	2100	
102 / 102 / 102	12 / 16 / 24	72 / 95 / 148	6 / 6 / 6	2200	
102 / 102 / 102	12 / 16 / 24	75 / 99 / 152	6 / 6 / 6	2300	
102 / 102 / 102	12 / 16 / 24	78 / 103 / 157	6 / 6 / 6	2400	
102 / 102 / 102	12 / 16 / 24	89 / 118 / 160	12 / 12 / 12	2500	
102 / 102 / 102	12 / 16 / 24	92 / 122 / 168	12 / 12 / 12	2600	
102 / 102 / 102	12 / 16 / 24	95 / 126 / 173	12 / 12 / 12	2700	
102 / 102 / 102	12 / 16 / 24	98 / 130 / 178	12 / 12 / 12	2800	
102 / 102 / 102	12 / 16 / 24	101 / 134 / 183	12 / 12 / 12	2900	
102 / 102 / 102	12 / 16 / 24	104 / 138 / 189	12 / 12 / 12	3000	

Teekay Repair Couplings are available to suit any pipe O.D. up to 3000 mm. Please contact us with OD prior to order placement.

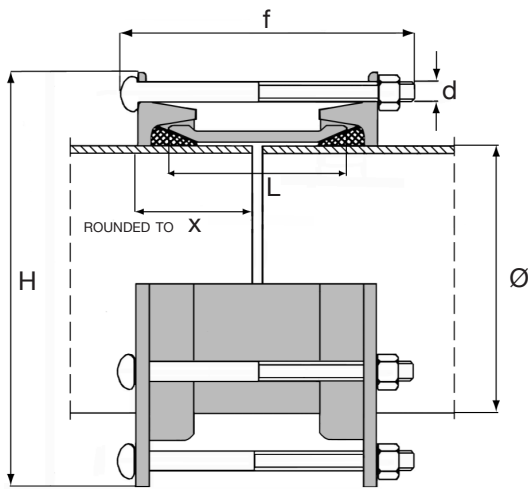


# GIUNTI DRESSER

## DRESSER PIPE COUPLINGS



STYLE129



STYLE129

Giunto DRESSER  
DRESSER pipe coupling

Permette il movimento assiale e laterale dei tubi al suo interno garantendo la tenuta idraulica.

- Adatto a tubi in ferro - plastica e vetroresina

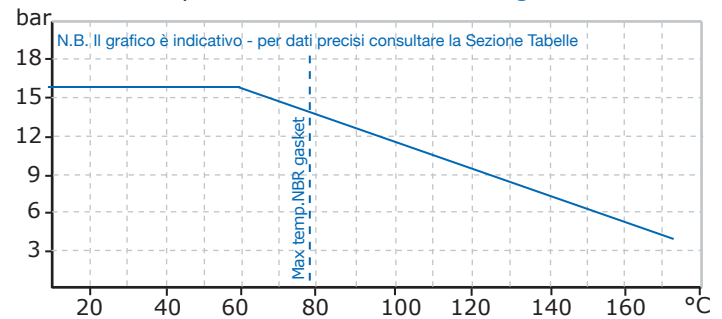
Allows generous pipe tolerances and axial movements  
- Suitable for joining plastics and GRP

**MOVIMENTO ANGOLARE MAX 6°**  
Max angular deflector 6°

Materiali - Composition

CORPO <i>BODY</i>	TIRANTI <i>BOLTS</i>	GUARNISIONI <i>GASKETS</i>
ACCIAIO ZINCATO <i>GALVANIZED STEEL</i>	ACCIAIO ZINCATO <i>GALVANIZED STEEL</i>	NBR

Pressione/temperatura di esercizio - *Rating*



Dimensioni *Dimensions mm.*

Misura - Measure		Dia .Est Tubo <i>Pipe o.d.</i> Ø	L	H	Tiranti - Bolts			X
mm.	Inc				No.	d	f	
50	2"	60.3	80	89	2	M 12	140	100
65	2.1/2"	76.1	100	155	2	M 12	165	100
80	3"	88.9	100	153	3	M 12	165	100
100	4"	114.3	100	178	3	M 12	165	100
125	5"	139.7	100	228	4	M 12	165	100
150	6"	168.3	100	256	4	M 12	165	100
200	8"	219.1	100	313	6	M 12	165	100
250	10"	273.1	100	370	6	M 12	165	100
300	12"	323.9	100	421	6	M 12	165	100
350	14"	355.6	150	452	8	M 12	230	150
400	16"	406.4	150	503	8	M 12	230	150

ALTRE MISURE SU RICHIESTA - OTHERS MEASURES ON REQUEST