



PN 16

VALVOLE A FLUSSO AVVIATO IN GHISA  
CAST IRON GLOBE VALVES

FIG. 161

Valvole a flusso avviato a via diritta PN16 coperchio imbullonato attacchi a flange  
Globe valves straight pattern PN16 screwed cover flanged ends

FIG. 162

Valvole con coperchio imbullonato ad angolo retto PN16 attacchi a flange  
Angle valves PN16 bolted bonnet, flanged ends

Materiali - Composition

| FIG        | CORPO<br>BODY                                 | OTTURATORE<br>DISC                      | SEDI<br>SEAT RING                       | ASTA<br>STEM                            |
|------------|---|---|---|---|
| 161<br>162 | GHISA<br>CAST IRON<br>G1.1                    | ACCIAIO INOX<br>STAINLESS STEEL<br>I1.2 | ACCIAIO INOX<br>STAINLESS STEEL<br>I1.2 | ACCIAIO INOX<br>STAINLESS STEEL<br>I1.2 |
| 161S       | GHISA SFEROIDALE<br>Nodular Cast Iron<br>GS.2 | BRONZO<br>BRONZE<br>B2.3                | BRONZO<br>BRONZE<br>B2.3                | OTTONE<br>BRASS                         |
|            |   | ACCIAIO INOX<br>STAINLESS STEEL<br>I1.2 | ACCIAIO INOX<br>STAINLESS STEEL<br>I1.2 | ACCIAIO INOX<br>STAINLESS STEEL<br>I1.2 |

Applicazioni Application

Acqua fredda o calda, acqua mare, vapore a bassa pressione ed altri fluidi non aggressivi.

Cold or hot water, sea water low pressure steam and other non-aggressive fluids

Pressione/temperatura di esercizio - Rating

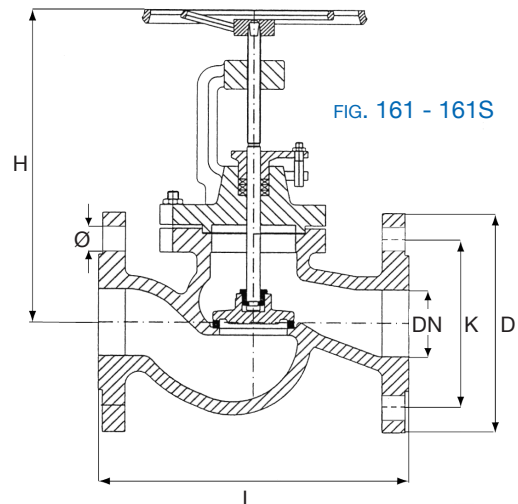
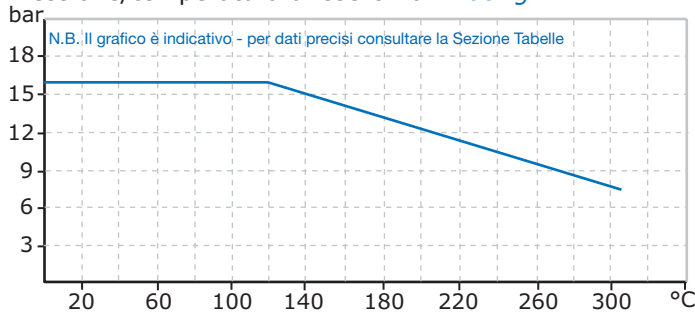
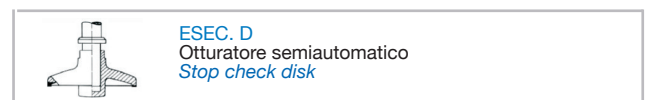
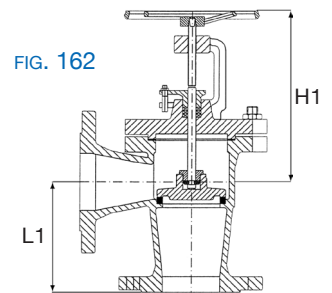


FIG. 161 - 161S

FIG. 162



Dimensioni Dimensions mm.

| FIG.                       | DN       | 15       | 20     | 25     | 32     | 40     | 50     | 65     | 80     | 100    | 125    | 150    | 200     | 250     | 300     |         |
|----------------------------|----------|----------|--------|--------|--------|--------|--------|--------|--------|--------|--------|--------|---------|---------|---------|---------|
| 161<br>161S                | L        | 130      | 150    | 160    | 180    | 200    | 230    | 290    | 310    | 350    | 400    | 480    | 600     | 730     | 850     |         |
|                            | H open   | 160      | 165    | 190    | 200    | 225    | 260    | 280    | 320    | 375    | 415    | 460    | 570     | 750     | 900     |         |
|                            | Kg.      | 3,8      | 4      | 5      | 7      | 11     | 13     | 18     | 23     | 35     | 53     | 75     | 135     | 215     | 305     |         |
| 162                        | L1       | 90       | 95     | 100    | 105    | 115    | 125    | 145    | 155    | 175    | 200    | 225    | 275     | 325     | 375     |         |
|                            | H1 open  | 160      | 160    | 166    | 170    | 212    | 223    | 240    | 290    | 320    | 410    | 450    | 512     | 705     | 785     |         |
|                            | Kg.      | 4,1      | 5      | 6      | 8      | 10     | 13     | 18     | 24     | 38     | 50     | 70     | 107     | 170     | 230     |         |
| foratura Flange - drilling | PN 6     | D        | 80     | 90     | 100    | 120    | 130    | 140    | 160    | 190    | 210    | 240    | 265     | 320     | 375     | 440     |
|                            |          | K        | 55     | 65     | 75     | 90     | 100    | 110    | 130    | 150    | 170    | 200    | 225     | 280     | 335     | 395     |
|                            |          | n.fori Ø | 4 - 11 | 4 - 11 | 4 - 11 | 4 - 14 | 4 - 14 | 4 - 14 | 4 - 14 | 4 - 18 | 4 - 18 | 8 - 18 | 8 - 18  | 8 - 18  | 12 - 18 | 12 - 22 |
|                            | PN 10    | D        | 95     | 105    | 115    | 140    | 150    | 165    | 185    | 200    | 220    | 250    | 285     | 340     | 395     | 445     |
|                            |          | K        | 65     | 75     | 85     | 100    | 110    | 125    | 145    | 160    | 180    | 210    | 240     | 295     | 350     | 400     |
|                            |          | n.fori Ø | 4 - 14 | 4 - 14 | 4 - 14 | 4 - 18 | 4 - 18 | 4 - 18 | 4 - 18 | 8 - 18 | 8 - 18 | 8 - 18 | 8 - 22  | 8 - 22  | 12 - 22 | 12 - 22 |
| PN 16                      | D        | 95       | 105    | 115    | 140    | 150    | 165    | 185    | 200    | 220    | 250    | 285    | 340     | 405     | 460     |         |
|                            | K        | 65       | 75     | 85     | 100    | 110    | 125    | 145    | 160    | 180    | 210    | 240    | 295     | 355     | 410     |         |
|                            | n.fori Ø | 4 - 14   | 4 - 14 | 4 - 14 | 4 - 18 | 4 - 18 | 4 - 18 | 4 - 18 | 8 - 18 | 8 - 18 | 8 - 18 | 8 - 22 | 12 - 22 | 12 - 26 | 12 - 26 |         |